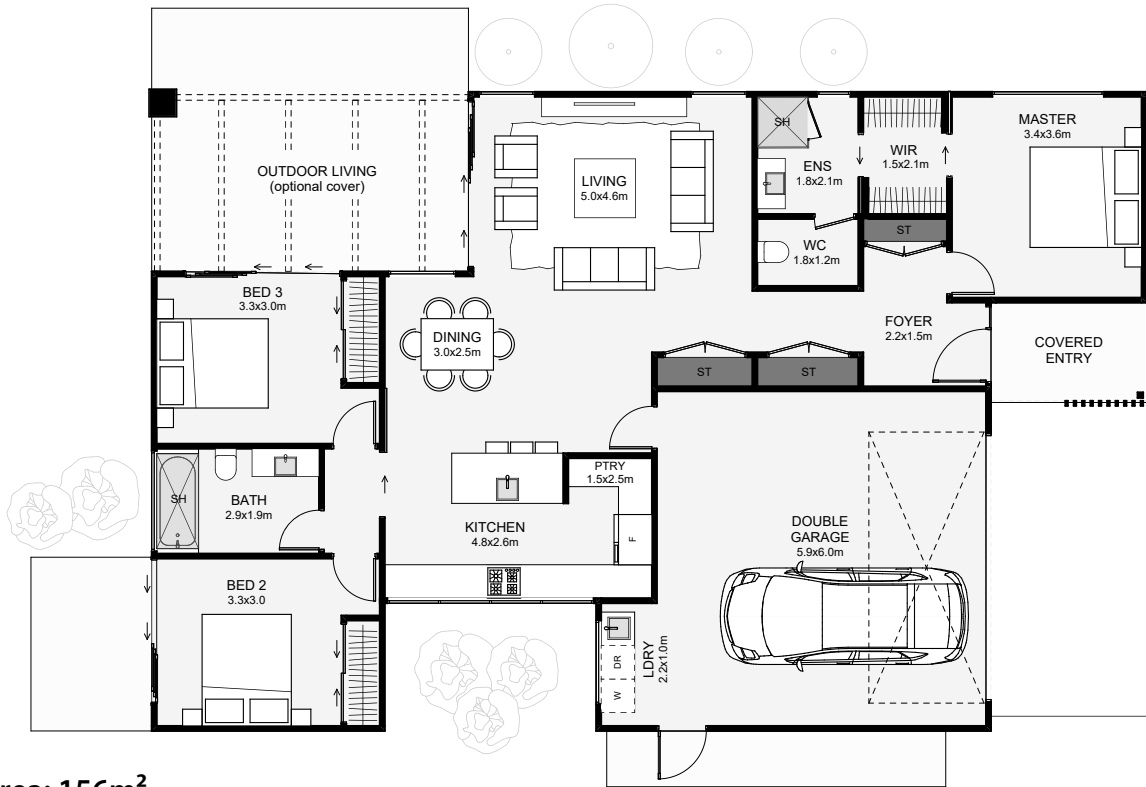
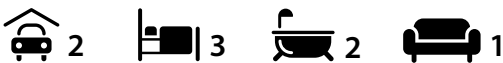




An elegant timber skeleton extrudes out from the simple, bold lines in this metal-clad home. Inside the open plan, living is offset, so the lounge is slightly privatised from the kitchen and dining. The master is positioned separately from the other rooms for increased privacy. The kitchen includes an open style pantry that's cleverly hidden. There's also the option of continuing the roof cover over the outdoor living or using a skeletor pergola to match the front. This home is a welcome architectural blend of bold and unique elements working together.



Floor Area: 156m<sup>2</sup>



17.8m | 11.5m

Contact us:

Call Tama: 027 201 8442

E: [info@newleafbuilders.co.nz](mailto:info@newleafbuilders.co.nz)

[www.newleafbuilders.co.nz](http://www.newleafbuilders.co.nz)

